

Circulators: Dropin

CMI has achieved strong capability in developing and manufacturing isolators and circulators. All of our designs are rated conservatively to ensure the utmost in reliability and successful system performance.

CMI offers a wide range of narrow and wide bandwidth RF and microwave isolator and circulator products in coaxial, drop-in and waveguide configurations that extend from 300MHz to 18GHz frequency ranges. You can select from the products listed below or send us specific requirements so that we can meet your needs better.

Specifications:

Forward power: 10/50/100 Watts

Reverse power: 1 Watt

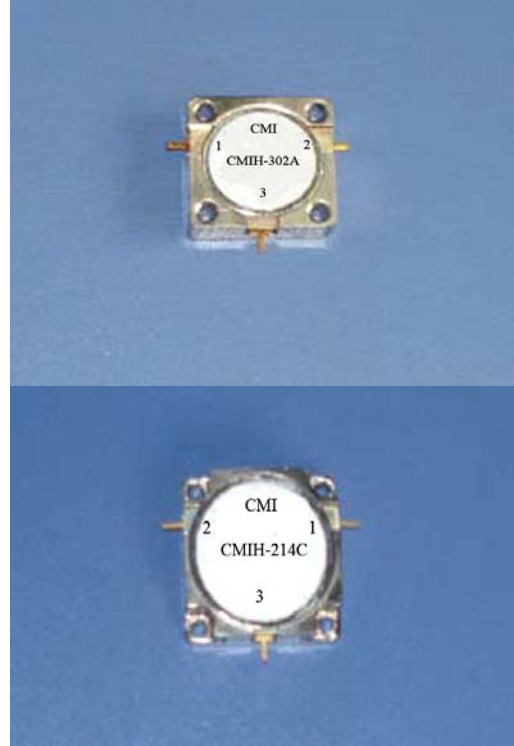
Order:

When ordering, please specify the center frequency (in GHz), Bandwidth (in MHz), Forward power etc.

Example: CMIH203-1.0-100-10, means: Circulator CMIH203, center frequency=1.0 GHz, bandwidth=100 MHz and Forward power 10 watts

Note:

Other special requirements are available, please contact the factory to discuss your requirements.



CALL OUR SALES DEPARTMENT FOR MORE INFORMATION OR VARIATIONS OF THIS PRODUCT.

Corry Micronics, Inc. One Plastics Rd. - Corry, PA 16407
(814) 664-7728 Fax (814) 664-4582 www.cormic.com

Corry Micronics Inc. herein referred to CMI, believes this information to be accurate, but makes no warranties, expressed or implied as to the accuracy of this document. CMI assumes no liability for any injury, loss, damage, direct or consequential arising from the use of our products. User assumes all risk whatsoever in connection with it's intended use. CMI also reserves the right to change this document without notice.

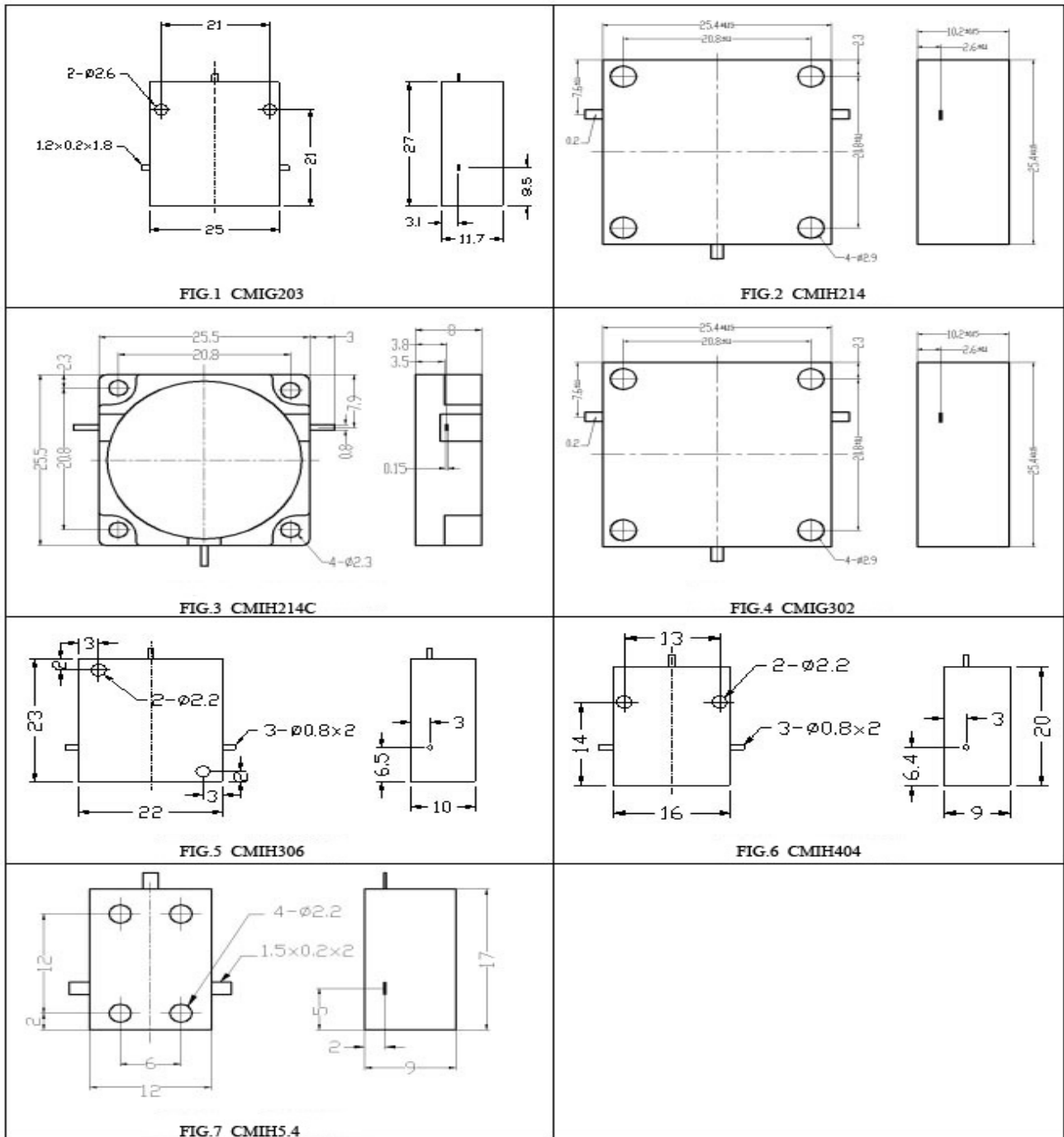
ISOLATOR MODEL NUMBER	FREQUENCY RANGE (GHz)	BANDWIDTH (MHz)	ISOLATION (dB Min.)	VSWR (MAX.)	INSERTION LOSS (dB MAX.)	OPERATING TEMPERATURE DEGREES C	OUTLINE
CMIH203	0.8-1.7	50	23	1.15:1	0.3	-40 to +85	1
		100	20	1.20:1	0.4	-40 to +85	1
		200	18	1.25:1	0.5	-40 to +85	1
CMIH214	0.8-2.2	50	23	1.15:1	0.3	-40 to +70	2
		100	20	1.20:1	0.4	-40 to +70	2
	0.925-0.965	FULL	23	1.15:1	0.3	-40 to +70	2
	1.8-2.4	FULL	20	1.20:1	0.4	-40 to +70	2
	1.805-1.88	FULL	23	1.20:1	0.3	-40 to +70	2
CMIH214CTGG311A	0.925-0.96	FULL	25	1.20:1	0.4	-10-+60	3
		FULL	25	1.20:1	0.4	-10-+60	3
		FULL	25	1.20:1	0.4	-10-+60	3
CMIH306	1.8-4.2	100	23	1.15:1	0.3	-25 to +70	5
		200	20	1.20:1	0.4	-25 to +70	5
CMIH404	4.0-7.0	300	23	1.15:1	0.25	-40 to +85	6
		500	20	1.22:1	0.3	-40 to +85	6
CMIG404	7.0-10.0	300	23	1.20:1	0.3	-40 to +85	7
		600	20	1.25:1	0.4	-40 to +85	7

CALL OUR SALES DEPARTMENT FOR MORE INFORMATION OR VARIATIONS OF THIS PRODUCT.

Corry Micronics, Inc. One Plastics Rd. - Corry, PA 16407
(814) 664-7728 Fax (814) 664-4582 www.cormic.com

Corry Micronics Inc. herein referred to CMI, believes this information to be accurate, but makes no warranties, expressed or implied as to the accuracy of this document. CMI assumes no liability for any injury, loss, damage, direct or consequential arising from the use of our products. User assumes all risk whatsoever in connection with it's intended use. CMI also reserves the right to change this document without notice.

Outline Drawings:



CALL OUR SALES DEPARTMENT FOR MORE INFORMATION OR VARIATIONS OF THIS PRODUCT.

**Corry Micronics, Inc. One Plastics Rd. - Corry, PA 16407
(814) 664-7728 Fax (814) 664-4582 www.cormic.com**

Corry Micronics Inc. herein referred to CMI, believes this information to be accurate, but makes no warranties, expressed or implied as to the accuracy of this document. CMI assumes no liability for any injury, loss, damage, direct or consequential arising from the use of our products. User assumes all risk whatsoever in connection with it's intended use. CMI also reserves the right to change this document without notice.