

Ultra-Broadband Couplers (SMA Type)

Features:

- Flat Frequency Response
- Frequency Range: 0.5-18 GHz
- Multi-Octave Bandwidths
- Temperature Range: -54 to +125°C
- Meets MIL-E-5400 Environments

Note: The connectors material can be brass or stainless steel.



Specifications:

PART NUMBER	FREQ.RANGE	COUPLING	FREQ.SENSITIVITY (dB)	ISOLATION	VSWR	INSERTION*LOSS
CMID-A201-06 A0	0.5-2GHZ	6±1 db	±0.6db	20db	1.25	0.4db
CMID-A201-10 A0	0.5-2GHZ	10±1 db	±0.6db	20db	1.25	0.5db
CMID-A201-15 A0	0.5-2GHZ	15±1 db	±0.6db	20db	1.20	0.5db
CMID-A201-20 A0	0.5-2GHZ	20±1 db	±0.6db	20db	1.20	0.4db
CMID-A202-06 A0	1-4GHZ	6±1 db	±0.6db	20db	1.25	0.4db
CMID-A202-10 A0	1-4GHZ	10±1 db	±0.6db	20db	1.25	0.5db
CMID-A202-15 A0	1-4GHZ	15±1 db	±0.6db	20db	1.20	0.5db
CMID-A202-20 A0	1-4GHZ	20±1 db	±0.6db	20db	1.20	0.4db
CMID-A203-06 A0	2-8GHZ	6±1 db	±0.6db	20db	1.25	0.4db
CMID-A203-10 A0	2-8GHZ	10±1 db	±0.6db	20db	1.25	0.5db
CMID-A203-15 A0	2-8GHZ	15±1 db	±0.6db	20db	1.20	0.5db
CMID-A203-20 A0	2-8GHZ	20±1 db	±0.6db	20db	1.20	0.4db
CMID-A204-06 A0	6-18GHZ	6±1 db	±0.7db	15db	1.50	1.0db
CMID-A204-10 A0	6-18GHZ	10±1 db	±0.7db	14db	1.50	1.0db
CMID-A204-15 A0	6-18GHZ	15±1 db	±0.7db	12db	1.50	1.0db
CMID-A204-20 A0	6-18GHZ	20±1 db	±0.7db	12db	1.50	1.0db

Notes:

INSERTION LOSS (Excluding coupled power)

Given for reference only, a value which is the internal power dissipation of the device not including the power routed to other ports.

**All published specifications apply by using a matched designed test fixture with testing performed at 23°C. Tests include VSWR, insertion loss and isolation. All measurements are performed in a 50 ohm impedance test system.

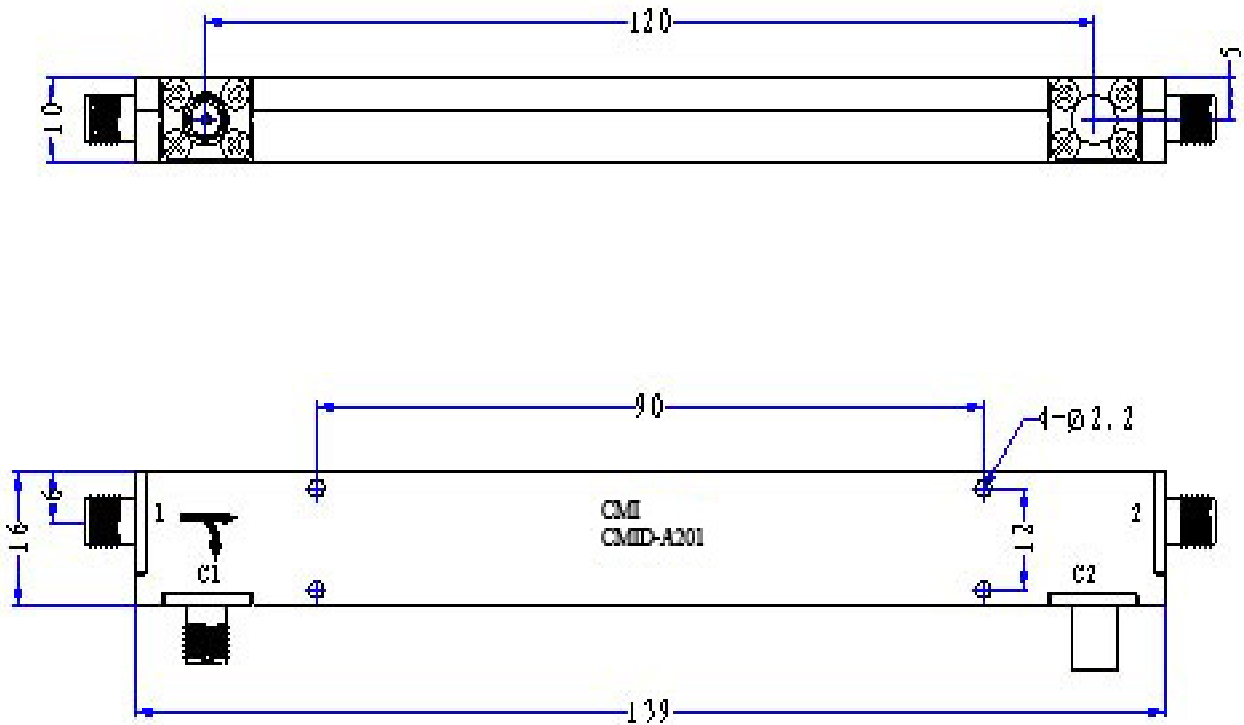
CALL OUR SALES DEPARTMENT FOR MORE INFORMATION OR VARIATIONS OF THIS PRODUCT.

Corry Micronics, Inc. One Plastics Rd. - Corry, PA 16407
(814) 664-7728 Fax (814) 664-4582 www.cormic.com

Corry Micronics Inc. herein referred to CMI, believes this information to be accurate, but makes no warranties, expressed or implied as to the accuracy of this document. CMI assumes no liability for any injury, loss, damage, direct or consequential arising from the use of our products. User assumes all risk whatsoever in connection with it's intended use. CMI also reserves the right to change this document without notice.

Outlines:

CMID-A201

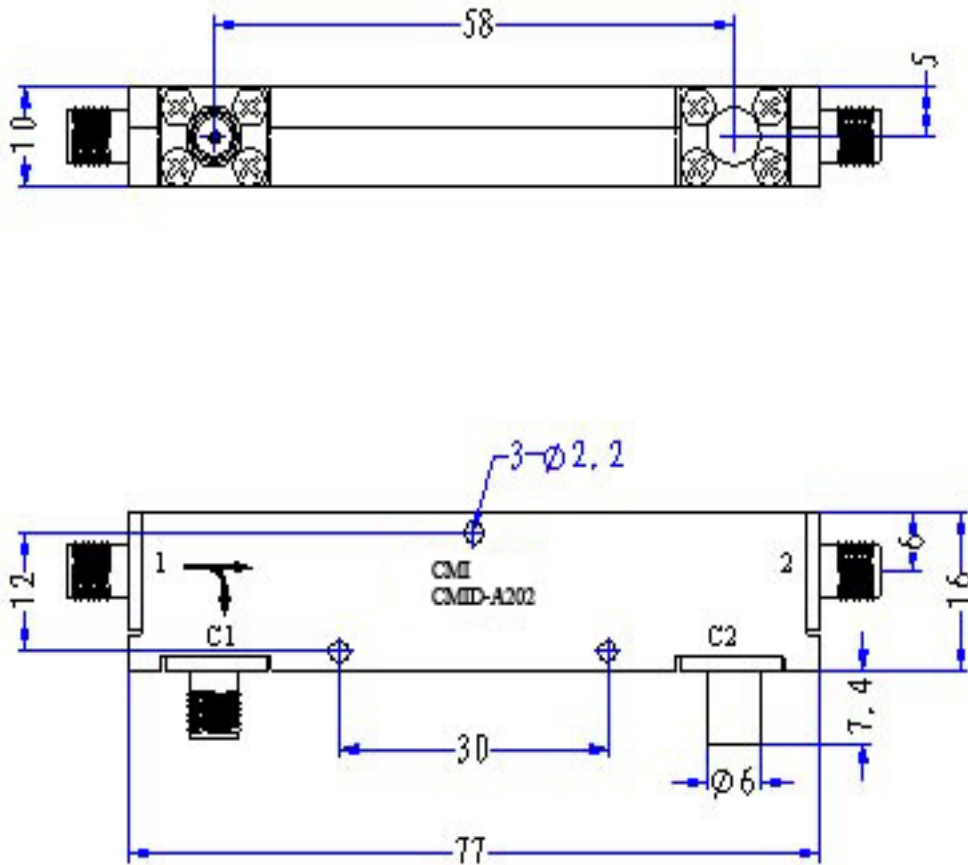


CALL OUR SALES DEPARTMENT FOR MORE INFORMATION OR VARIATIONS OF THIS PRODUCT.

**Corry Micronics, Inc. One Plastics Rd. - Corry, PA 16407
(814) 664-7728 Fax (814) 664-4582 www.cormic.com**

Corry Micronics Inc. herein referred to CMI, believes this information to be accurate, but makes no warranties, expressed or implied as to the accuracy of this document. CMI assumes no liability for any injury, loss, damage, direct or consequential arising from the use of our products. User assumes all risk whatsoever in connection with it's intended use. CMI also reserves the right to change this document without notice.

CMID-A202

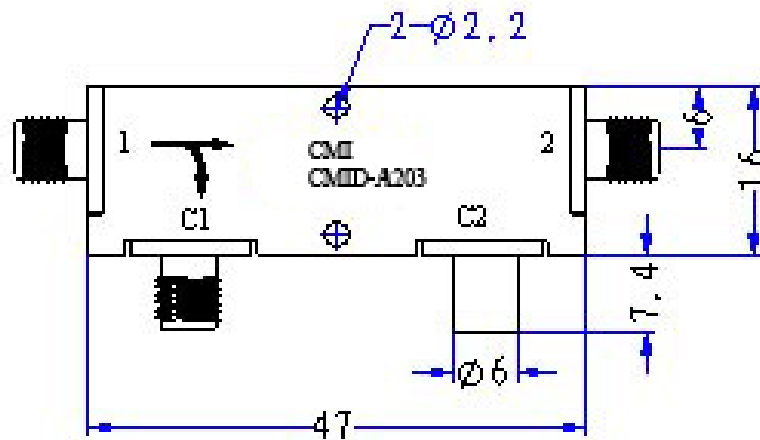
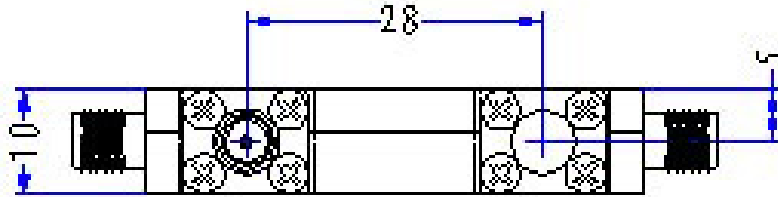


CALL OUR SALES DEPARTMENT FOR MORE INFORMATION OR VARIATIONS OF THIS PRODUCT.

Corry Micronics, Inc. One Plastics Rd. - Corry, PA 16407
(814) 664-7728 Fax (814) 664-4582 www.cormic.com

Corry Micronics Inc. herein referred to CMI, believes this information to be accurate, but makes no warranties, expressed or implied as to the accuracy of this document. CMI assumes no liability for any injury, loss, damage, direct or consequential arising from the use of our products. User assumes all risk whatsoever in connection with it's intended use. CMI also reserves the right to change this document without notice.

CMID-A203



CALL OUR SALES DEPARTMENT FOR MORE INFORMATION OR VARIATIONS OF THIS PRODUCT.

Corry Micronics, Inc. One Plastics Rd. - Corry, PA 16407
(814) 664-7728 Fax (814) 664-4582 www.cormic.com

Corry Micronics Inc. herein referred to CMI, believes this information to be accurate, but makes no warranties, expressed or implied as to the accuracy of this document. CMI assumes no liability for any injury, loss, damage, direct or consequential arising from the use of our products. User assumes all risk whatsoever in connection with it's intended use. CMI also reserves the right to change this document without notice.

