

### RF 0° 8&9-Way



C+



T32+

### 0° Power Splitters/Combiners 50Ω/75Ω

8Way												
Model No.	Freq. Range (MHz) fL-fU	Insertion Loss (dB)			Isolation (dB)			(VSWR)		Unbalance		Case Style
		L	M	U	L	M	U	Max		Phase	Amp	
		Typ/Ma	Typ/Ma	Typ/Ma	Typ/Min	Typ/Min	Typ/Min	In	Out	(°) Max	(dB) Max	
CMIFLC-8-1	1-200	0.8/1.2	0.8/1.2	1.0/1.6	30/25	30/20	25/18			5	0.5	C
CMIFLT-8-1	0.5-175	0.8/1.2	0.8/1.2	0.8/1.6	30/25	30/20	25/20			5	0.3	T32
*CMIFLT-8-1-75	0.5-175	0.5/1.0	0.6/1.1	0.7/1.3	25/20	30/20	25/20			5	0.3	T32
*CMIFLT-8-4-75	5-1000	0.4/1.0	0.6/1.6	1.6/2.7	30/20	25/20	20/15			13	1.2	T32
CMIFLT-8-1W	5-500	0.8/1.2	1.2/1.8	1.8/2.0	35/25	30/25	25/20			8	0.7	T13
CMIFLT-8-0810	800-1000	1.2/1.8	0.9			20		1.2			0.5	T21
CMIFLT-8-1020	1000-2000		1.0			20		1.5			0.5	T21
CMIFLT-8-3742	3700-4200		0.3/0.8			25		1.6	1.5	8	0.5	T21

\*75Ω Model

**CALL OUR SALES DEPARTMENT FOR MORE INFORMATION OR VARIATIONS OF THIS PRODUCT.**

**Corry Micronics, Inc. One Plastics Rd. - Corry, PA 16407  
(814) 664-7728 Fax (814) 664-4582 [www.cormic.com](http://www.cormic.com)**

Corry Micronics Inc. herein referred to CMI, believes this information to be accurate, but makes no warranties, expressed or implied as to the accuracy of this document. CMI assumes no liability for any injury, loss, damage, direct or consequential arising from the use of our products. User assumes all risk whatsoever in connection with it's intended use. CMI also reserves the right to change this document without notice.



# PRODUCT SPECIFICATION

9Way												
Model No.	Freq. Range (MHz) fL-fU	Insertion Loss (dB)			Isolation (dB)			(VSWR)		Unbalance		Case Style
		L	M	U	L	M	U	Max		Phase	Amp	
		Typ/Ma	Typ/Ma	Typ/Ma	Typ/Min	Typ/Min	Typ/Min	In	Out	(°) Max	(dB) Max	
CMIFLC-9-1	2-300	0.6/1.1	0.9/1.4	1.5/2.0	35/25	25/20	20/15			10	0.8	C

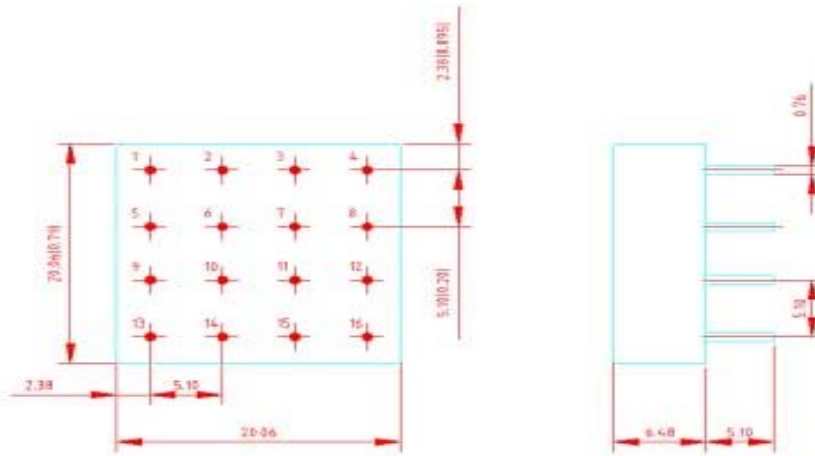
**Pin Connections:**

Model No.	Sum Port	Divide Port	Gnd Ext.
CMIFLC-8-1	2	1,5,9,13,16,12,8,4	3,6,7,14,15
CMIFLC-9-1	1	9,13,14,15,16,12,8,4,3	others

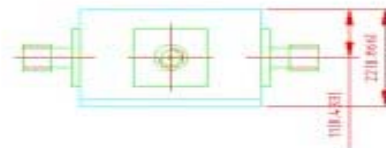
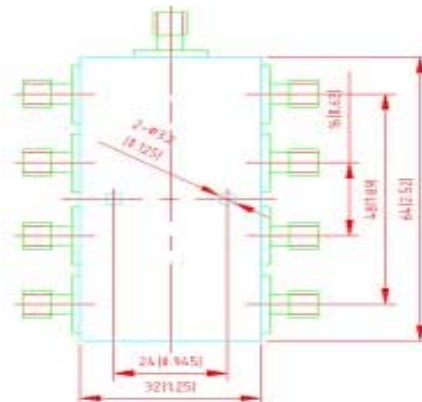
**CALL OUR SALES DEPARTMENT FOR MORE INFORMATION OR VARIATIONS OF THIS PRODUCT.**

**Corry Micronics, Inc. One Plastics Rd. - Corry, PA 16407  
 (814) 664-7728 Fax (814) 664-4582 [www.cormic.com](http://www.cormic.com)**

Corry Micronics Inc. herein referred to CMI, believes this information to be accurate, but makes no warranties, expressed or implied as to the accuracy of this document. CMI assumes no liability for any injury, loss, damage, direct or consequential arising from the use of our products. User assumes all risk whatsoever in connection with it's intended use. CMI also reserves the right to change this document without notice.



C

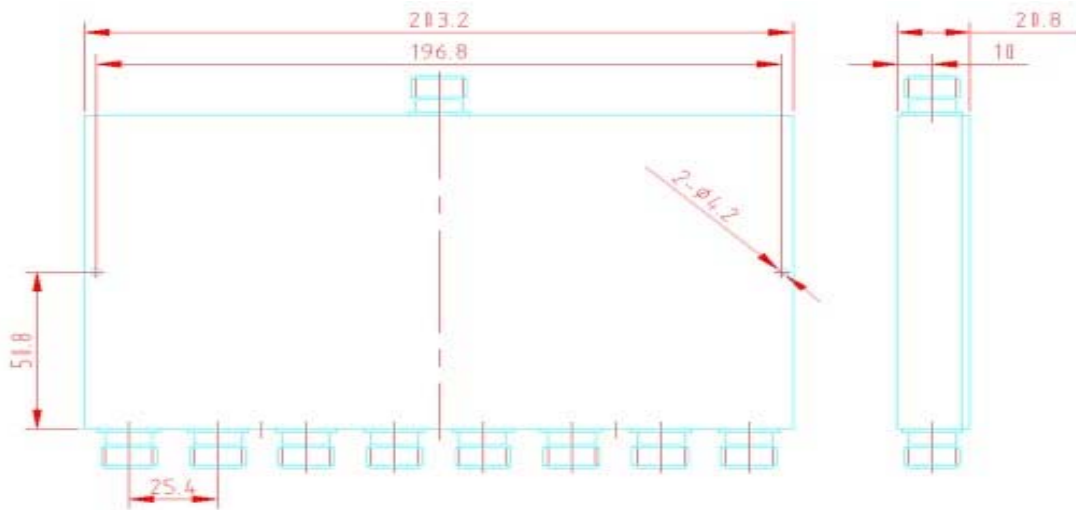


T13

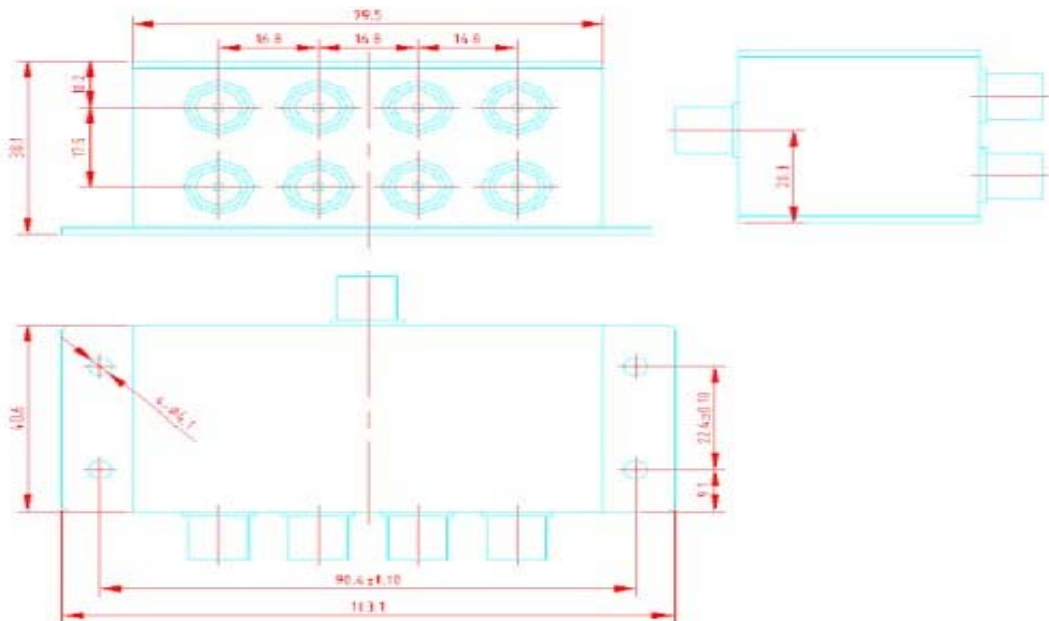
**CALL OUR SALES DEPARTMENT FOR MORE INFORMATION OR VARIATIONS OF THIS PRODUCT.**

**Corry Micronics, Inc. One Plastics Rd. - Corry, PA 16407**  
**(814) 664-7728 Fax (814) 664-4582 [www.cormic.com](http://www.cormic.com)**

Corry Micronics Inc. herein referred to CMI, believes this information to be accurate, but makes no warranties, expressed or implied as to the accuracy of this document. CMI assumes no liability for any injury, loss, damage, direct or consequential arising from the use of our products. User assumes all risk whatsoever in connection with it's intended use. CMI also reserves the right to change this document without notice.



**T21**



**T32**

**CALL OUR SALES DEPARTMENT FOR MORE INFORMATION OR VARIATIONS OF THIS PRODUCT.**

**Corry Micronics, Inc. One Plastics Rd. - Corry, PA 16407  
(814) 664-7728 Fax (814) 664-4582 [www.cormic.com](http://www.cormic.com)**

Corry Micronics Inc. herein referred to CMI, believes this information to be accurate, but makes no warranties, expressed or implied as to the accuracy of this document. CMI assumes no liability for any injury, loss, damage, direct or consequential arising from the use of our products. User assumes all risk whatsoever in connection with it's intended use. CMI also reserves the right to change this document without notice.